



Stentofon Intercom Integration App-note

Contents

1. Introduction.....	3
1.1 Requirements	3
1.2 Integration Components	4
2. Device Addition and Configuration	5
2.1 Add a New Device in CathesisVision	5
2.2 Configuration Section (Tabs)	6
3. Camera Tab Overlay Setup	11
3.1 Enable the overlay	11
4. Database	13
4.1 Navigate to the database	13
4.2 Database Interface	14
5. Events	19
5.1 Creating an Event.....	19
5.2 Triggers	19
5.3 Actions	22
5.4 Resources.....	22
6. Conclusion	23

While Cathesis has made every effort to ensure the accuracy of this document, there is no guarantee of accuracy, neither explicit nor implied. Specifications are subject to change without notice.

1. Introduction

This document will detail the integration of the Stentofon Intercom with CathesisVision software. This integration will display device events in order to log calls.

Audio is not a part of the integration, as this is not available as an option through the SDK. If audio is required, then it should be recorded on the camera linked to the intercom. Review of the call will only have audio if it is recorded on the camera.

1.1 Requirements

1.1.1 Software

- CathesisVision 2020.4 and later.
- Windows 10: 64-bit and later, Win Server 2008 R2 and later.
- Minimum 4GB of RAM required.

Note:

1. For information regarding the regular operation of a Stentofon device, please consult the relevant Stentofon documentation.
2. There is a General Integration section in the main CathesisVision manual. It contains information on creating an integration database, as well as a general introduction to the Integration Panel. Read over this section.
3. The Stentofon software version is 13.1.3.5.

1.1.2 License

The Stentofon license requirements are the following:

CSTF-1001	Stentofon station
CSTF-2000	Stentofon device
CSTF-3000	Stentofon bundle

Note: in this integration, individual devices will require a license for each device.

A NOTE ON CAMERA CHANNELS

The CathesisVision software packages have **limits on camera channels**. A multi-head camera is physically a single device (camera) but it **requires a camera channel for each one of the internal cameras**. The same applies to an encoder: a 16-channel encoder will account for 16 camera channels on the CathesisVision software, even though it is a single device.

1.2 Integration Components

All CathexisVision integrations have two component levels: **Device** and **Object**.

Device The device is CathexisVision software's interface, which handles all the interaction between CathexisVision and the integrated hardware. When an integration is added to the CathexisVision system, a device is added.

The messages received from the device are called Device Events.

Objects Objects are the individual pieces of hardware that comprise the integration. There may be multiple "object types" under the objects group.

USEFUL LINKS

To view **tutorial videos** on CathexisVision setup, visit <https://cathexisvideo.com/resources/videos>

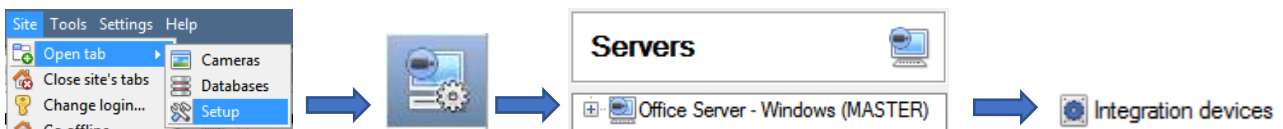
Find answers to Cathexis **Frequently Asked Questions**: <https://cathexis.crisp.help/en/?1557129162258>

2. Device Addition and Configuration

This section details the procedure for setting up the two systems to effectively communicate with each other.

2.1 Add a New Device in CathesisVision

Integrations are added on a server-by-server basis. They are managed in the Integration Devices panel, under the Setup Tab of the servers to which they are added. To get to the Integration Panel, follow this path:

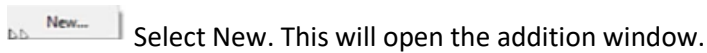


There are two sections in the Integration Panel:

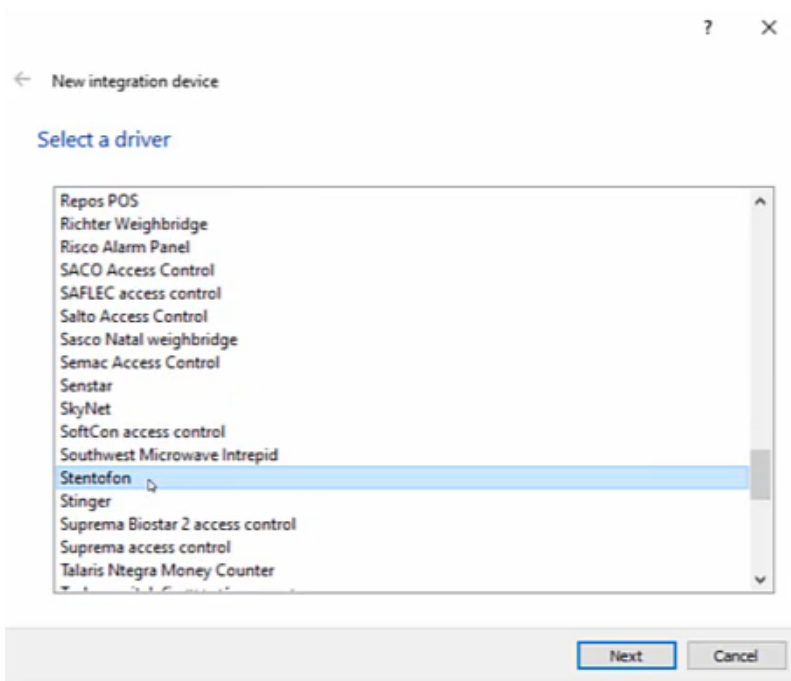
1. The **devices** list will list the integration devices attached to the integration database.
2. The **Configuration** section enables editing/reviewing the device selected in the **devices** section.

2.1.1 Device Addition

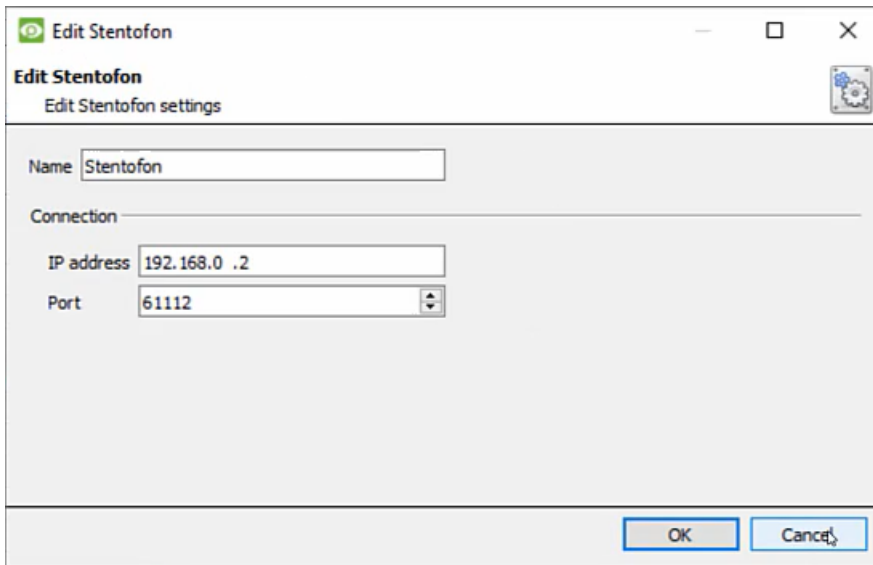
1. Once in the Integration Panel, in the devices section, right-click.



2. Select **Stentofon** device from the list.



3. Give the device a descriptive **name**.



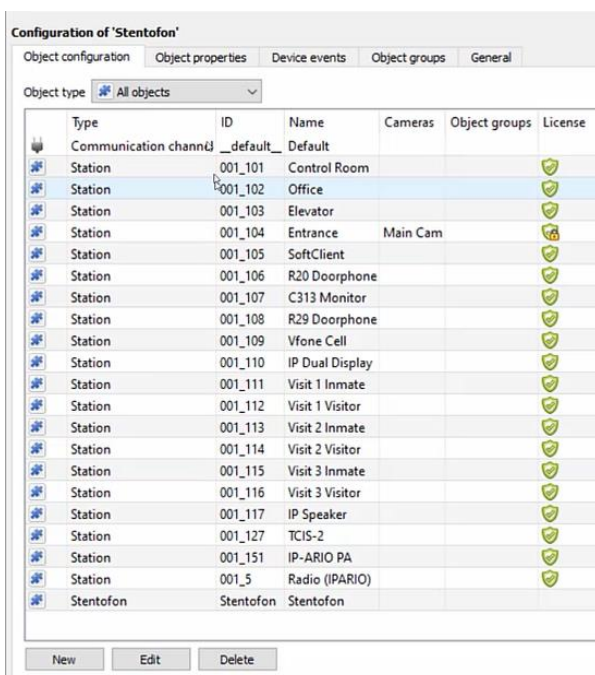
Type the **IP Address** of the unit the Stentofon integration software is running on, as well as the **port number** it is using to send the information.

2.2 Configuration Section (Tabs)


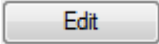

The configuration section is divided up into a number of tabs. These tabs are: **Object configuration**, **Object properties**, **Device events**, **Object groups**, and **General**.

The object configuration tab is the tab where all the individual objects that comprise the integration may be viewed.

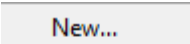
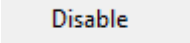
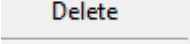
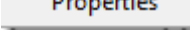
2.2.1 Object Configuration Tab



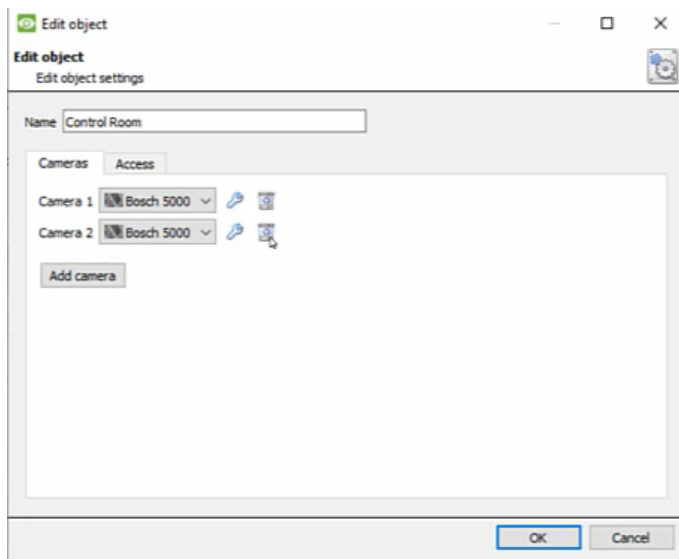
2.2.1.1 Object Configuration Buttons

-  Click on **New** to add a new object.
-  Click on **Edit** to open up an existing object for editing.
-  Click on **Delete** to delete an existing object from the CathesisVision configuration.

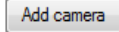
2.2.1.2 Object Configuration Right-click Options

-  **New** will open up the dialogue to add a new object.
-  **Disable/Enable** allows manually enabling/disabling individual nodes.
-  **Delete** will permanently remove this object from the list.
-  **Properties** will open up the object properties. The object may be edited from here. Specifically, assign cameras to this object.

2.2.1.3 Edit Object: Cameras



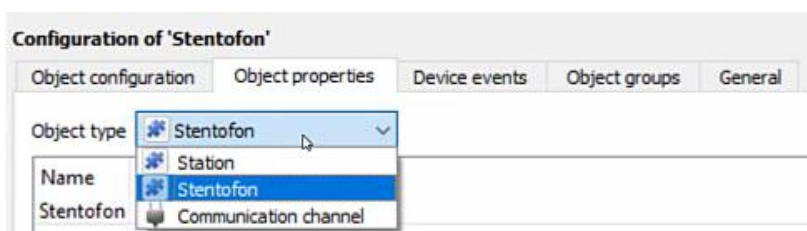
Adding a camera to an object will mean that, whenever there is an event on that object, the recording from that camera will be related to the time and date of the object event, in the Integration database.

To add a camera, double-click on any object.  Click **Add camera**. Select the relevant camera from the drop-down menu. Users can add up to four cameras.

 To delete a camera, click this icon.

2.2.2 Object Properties Tab

The Object properties tab allows viewing objects, sorted by type. In the case of the Stentofon device, there is the option of viewing by **Station**, **Stentofon**, and **Communication channel**.



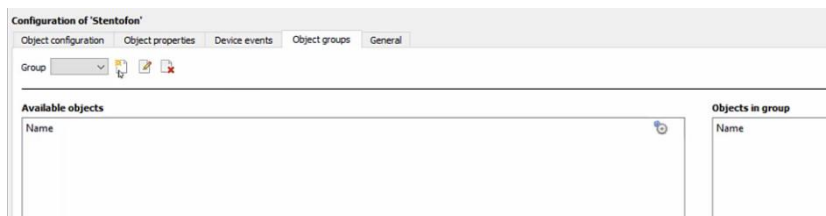
2.2.3 Device Events Tab



This will list real-time events happening on this device. Operators can monitor live events happening on site.

Device events can be filtered via **call**, **call end**, and **Communication state**.



2.2.4 Object Groups Tab



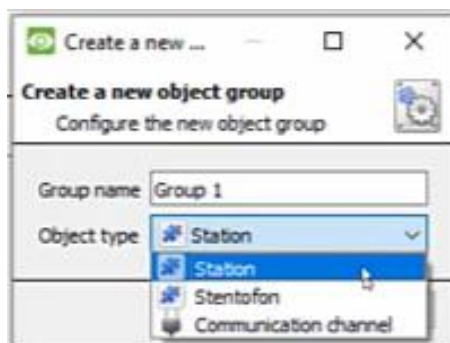
Groups of the same type of object can be created.

Tip: When setting up Events, events can be triggered by an object group.

2.2.4.1 Create a Group

-  To create a group, click on this icon.
-  To edit a group, click on this icon.

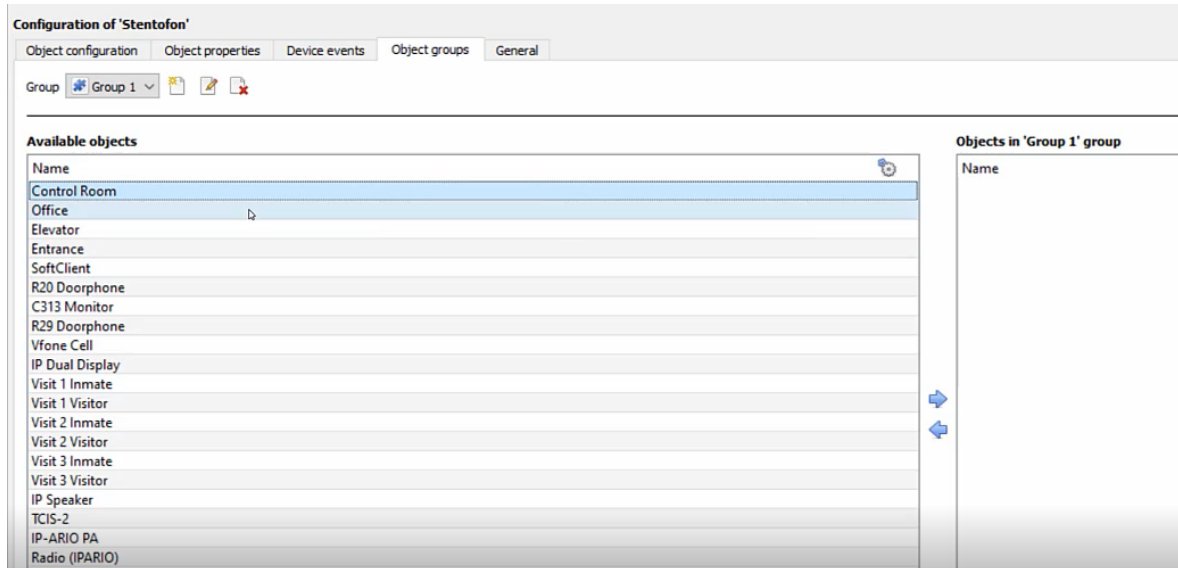
Note: once a group has been created, the object type of the group may not be edited.





When creating a group, select the object type to include in the group. Once the group is created, the available objects panel will fill up with all available objects of that type. From this list, choose which objects to use in the Group.

Give the group a descriptive **Group name**.

Click on the drop-down menu to select the **object type** to group.

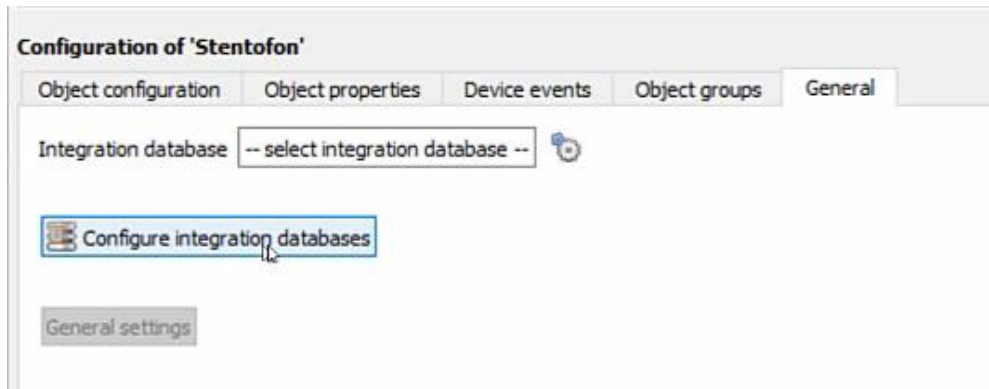


There will then be a list of Available Objects. Multiple objects may be selected at a time.


-  To add these objects to the group, select them and click on this arrow.
-  To remove these objects from the group, select them and click on this arrow.


2.2.5 General Tab

The general tab deals with the integration database. Here, select a pre-created database, or configure a new database.

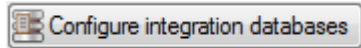


2.2.5.1 Select an Integration database

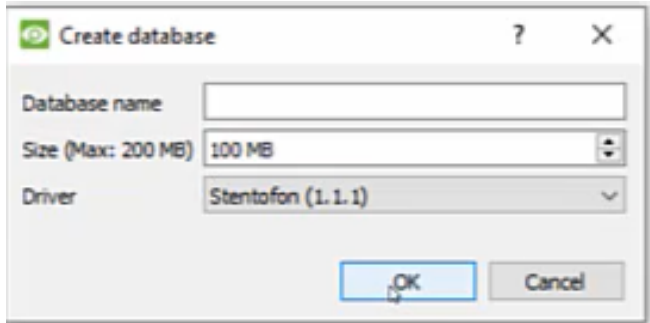
Integration database 

 To select a database, click on the **gear icon**. Select the relevant database. Only databases which relate to the device being added should appear.

2.2.5.2 Configure a new database



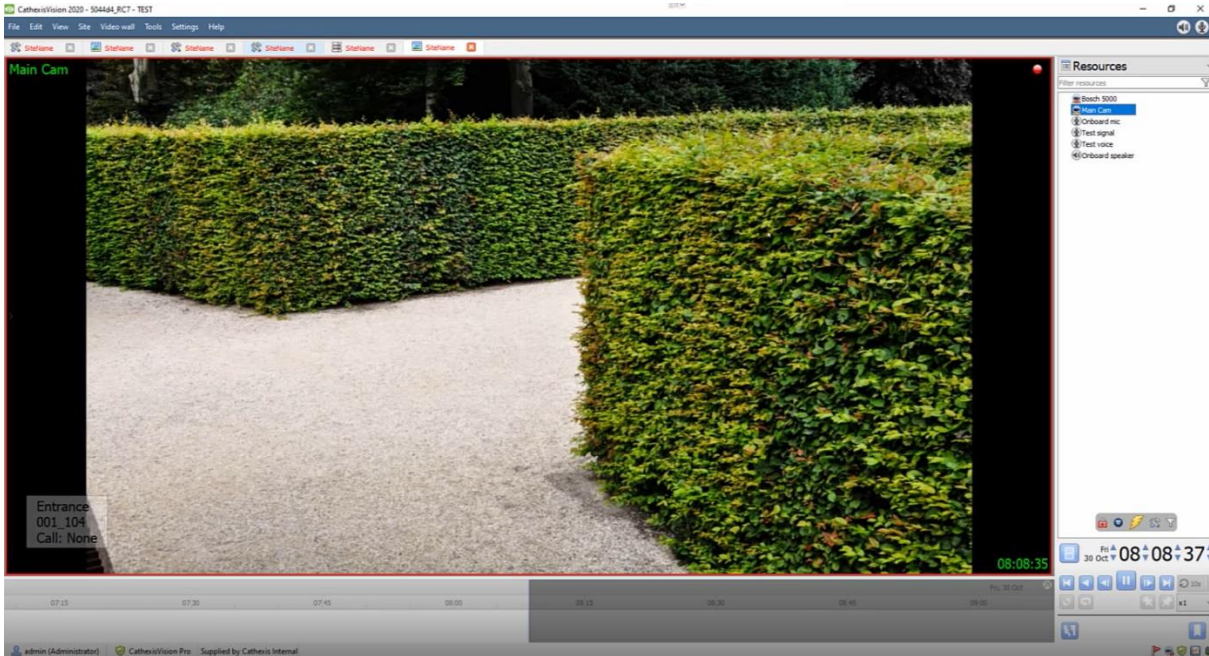
If there is no database created yet, clicking on this button will navigate to the integration database setup.



Note: The information on setting up an integration database may be found in the **Integration Devices General Settings** section of the CathesisVision Setup Manual.

3. Camera Tab Overlay Setup

Once all the relevant settings have been configured, the access control overlay can be pulled through over the appropriate camera feed.

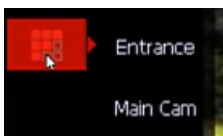


Note: Cameras must have already been added to objects, and overlays must have already been configured.

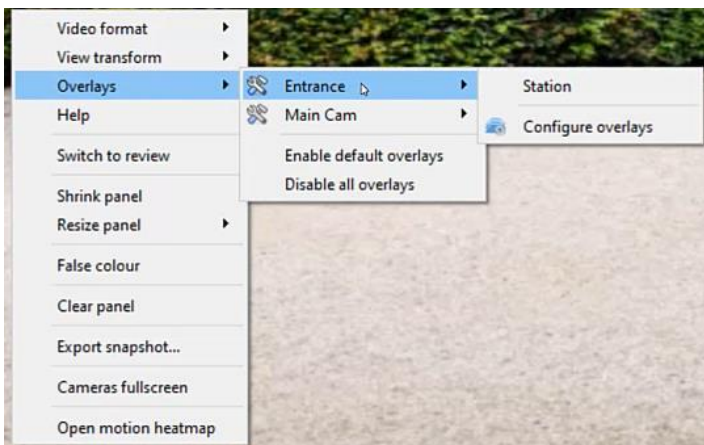
3.1 Enable the overlay



To bring up the overlay, click the arrow to the left of the screen. This pops out the Video feed options panel. The Video feed options panel will present a number of options specific to the settings configured for that video feed.



Click on the icon to bring up the overlay options for this video feed. Select the overlay.



Alternatively, right-click and then select **Overlays / the object utilised** (in this example, Entrance) / **overlay option**.

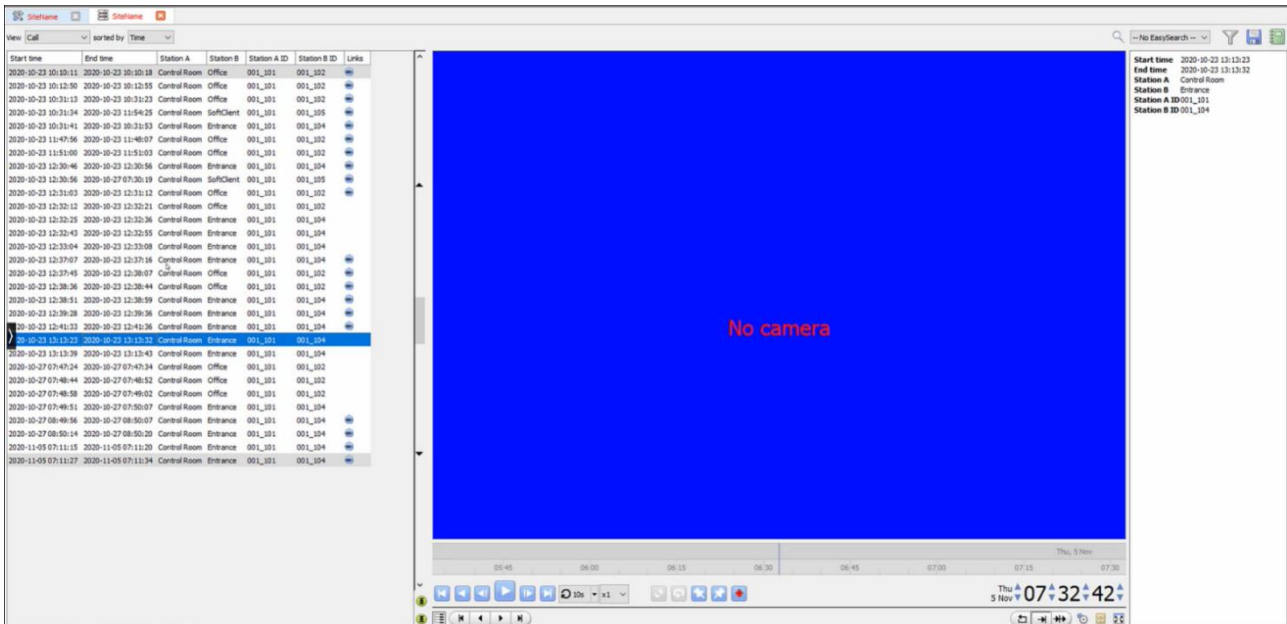


When an event has been triggered on the object, the overlay will appear. The overlay will not appear until an event has occurred. It will remain in that position until a call is made.

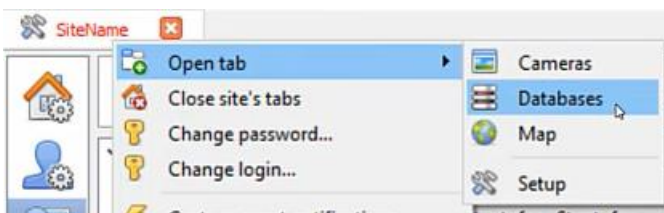
4. Database

The database tab allows navigating to the databased entries, for each individual database. In the database tab, each database is presented as a table. It has built in filters, and the ability to navigate by timestamp. If a database entry has an associated recording, this recording can be launched from within the database tab.

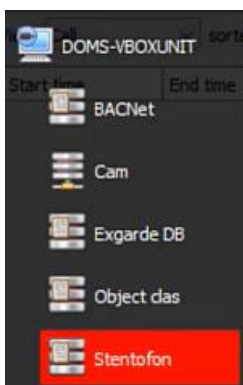
Most integrations will have a different database presentation, and unique filters, due to the different parameters sent to CathexisVision by the integrated device.



4.1 Navigate to the database



View information stored in the Integration database, by following the path: **Right-click site tab / open tab / Databases**. This will navigate to the Database Tab.

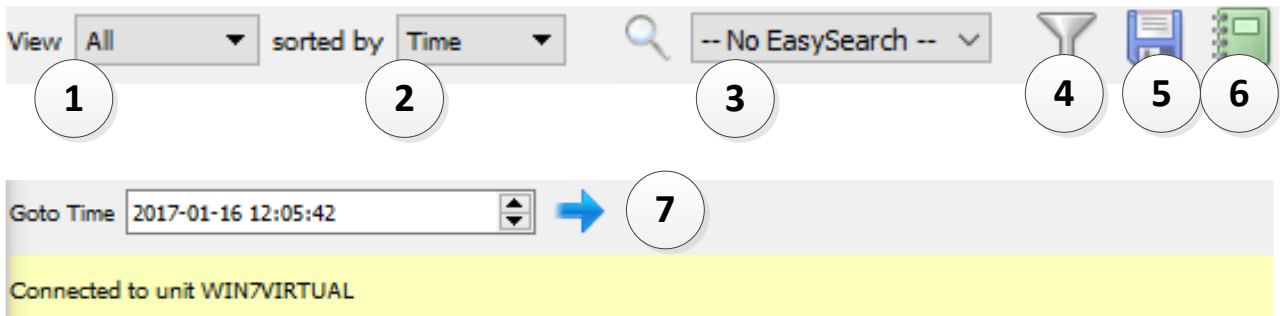


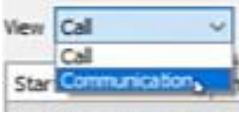
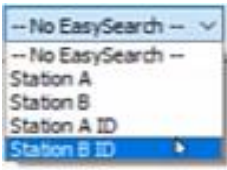






When the database tab opens, select the relevant integration database from the database panel that opens on the left-hand side. The databases are ordered under the NVRs that they are attached to.

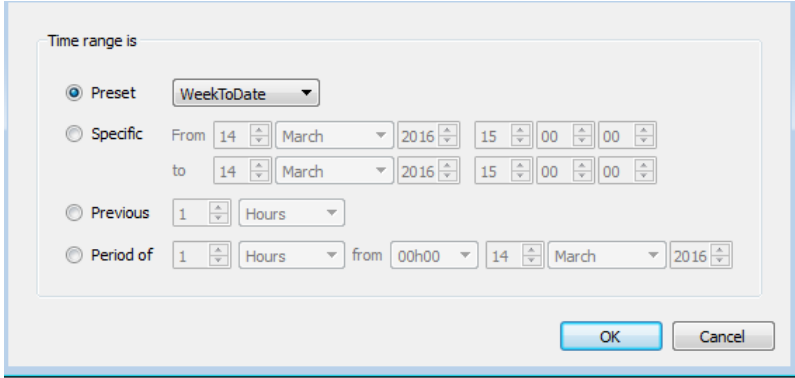



To open and close this list, click on the arrow in the centre of the list:

4.2 Database Interface



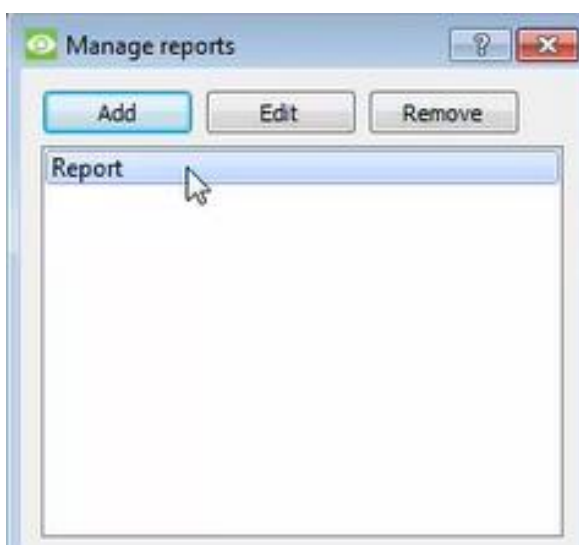
<p>① View</p>	<p>Change the way that the database is presented. Some integration databases have multiple view options. The Stentofon Intercom database has the following view options: Call and Communication.</p> 
<p>② Sorted By</p>	<p>Sort the Events based on the following parameters: Time.</p>
<p>③ Easy Search</p>	<p>The easy search option (only available for Call events) allows quickly searching the database within one of the following options:</p> 
<p>④ Filter </p>	<p>Filter offers a more advanced manner of sorting information in the Integration Database table.</p> <p>Once the filters dialogue is open, the following options are available:</p> <p><input checked="" type="checkbox"/> Enable filters Check this box to enable filters.</p> <p> Click on this icon to add a new filter.</p> <p>The filter icon will change when filters are active.   </p> <p> Click on this icon to delete an added filter.</p> <p>A Time range, within which the search will be conducted, may also be set.</p> <p>To set a Time range, click on the blue hyperlinked text which specifies time (for example, in the Week to date).</p>

	<p>This will bring up the following dialogue box, where the time range can be defined:</p>  <p>Note:</p> <ol style="list-style-type: none"> Multiple filters may be run simultaneously. Filters with the same parameters may be run more than once. To change a filter, click on the blue hyperlinked text.
<p>⑤ Export</p>	<p>Generate metadatabase reports in PDF or CSV format. See below.</p>
<p>⑥ Manage Reports</p>	<p>Generate scheduled metadatabase reports. See below.</p>
<p>⑦ Go to Time</p>	<p>This navigates to a specific point in time, down to the second. To navigate to a timestamp, set the time using the time and date boxes, and then click on the  icon.</p>

4.2.1 Manage Reports



Click this icon to open the schedule report window.



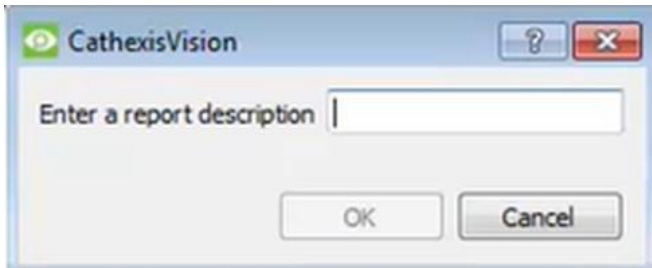
All created reports will be listed here.

First, click **Add** to create a report. Then **edit** to define the reporting schedule. See below for more detail.

To create, edit, or delete a report, select the entry and click on the corresponding button.

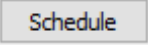
4.2.2 New Scheduled Report

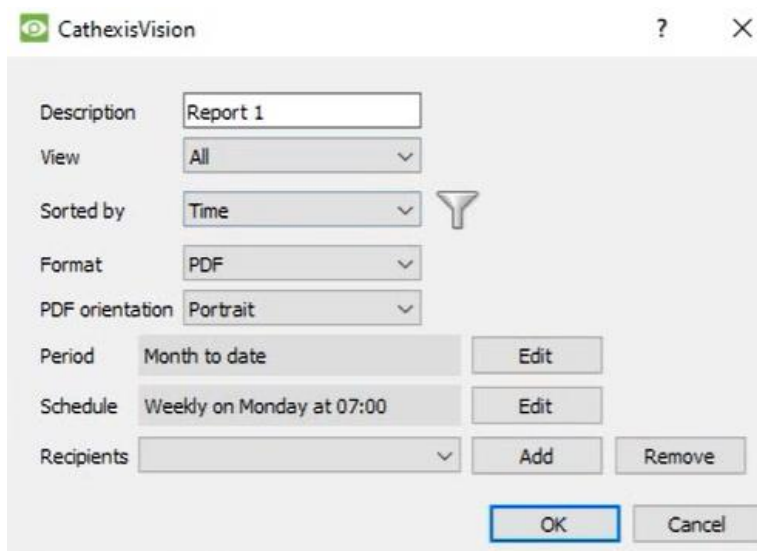
Click **Add** and give the report a description:



Click **OK** when done.

Once the new report is listed with the other reports, select it for editing to define the reporting schedule.

Either right-click the entry and select schedule or select the entry and click the schedule button at the bottom of the screen: .



Edit the **description** if needed.

Edit **Viewing** options.

Select the **Sorted by** option.

Select the **Format**.

Select the **orientation** of the Format.

Select the **period** to be reported on.

Define the **Schedule** for the report.

Add/remove recipients to whom reports will be sent.

Add recipient: Click **Add** and enter the email address of the recipient. Multiple recipients may be added. All will receive emails.

Remove recipient: Select the recipient from the dropdown menu and click **Remove**.

4.2.3 Generate Metadatabase Reports



Click this icon to open the Export window.

Select the **Period** to export, and enter the required details.

Click **Next**.

Select the **Format** to export the report in; either CSV or PDF.

See below for the two options.

4.2.3.1 Export CSV

Select CSV **Format**.

Edit the **Filename** by either entering it straight into text field (replacing **report.csv**), or click the to choose a new save folder and filename.

4.2.3.2 Export PDF

Select PDF **Format**.

Give the PDF a **Heading**.


Select either Landscape or Portrait **Orientation** of the PDF.

Edit the **Filename** by either entering it straight into text field (replacing **report.csv**), or click the to choose a new save folder and filename.

4.2.4 Metadata

Start time	2020-10-23 13:13:23	On the right-hand side of the database, meta-data about the event entry is displayed.
End time	2020-10-23 13:13:32	
Station A	Control Room	
Station B	Entrance	
Station A ID	001_101	
Station B ID	001_104	

4.2.5 Viewing an Entry's Associated Recording

To view a databased event's recording, left-click on a database entry which has the  icon in the **Links** column. Then click **play** in the video player.

5. Events


A CathesisVision event has a trigger, which causes an action. Set integrated devices to act as triggers, or as actions. This document will detail the Stentofon specific aspects of Events. There is a comprehensive guide to CathesisVision Events in the main setup manual.

Most of the data that CathesisVision receives from a device is presented in the Events interface. This is done in order to give the user a full range of options. As a result, some of the options presented in the interface may be *impractical* as an event trigger, or action.

5.1 Creating an Event

To create an event using the Stentofon Intercom device, enter the Events management area:

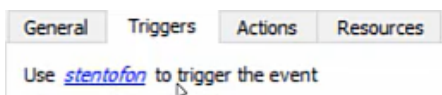


1.  Once in the Events Management area, right-click and select **New**. This will open up the New Event window.
2. [standard triggers](#) Once in this window, select the Triggers tab and click on the hyperlink titled “standard triggers”. From the drop-down menu, select the Stentofon device.

5.2 Triggers

A trigger is the user-defined input that notifies the event to start. The trigger causes the subsequent action (which the user will also define).

5.2.1 Set the device as the trigger

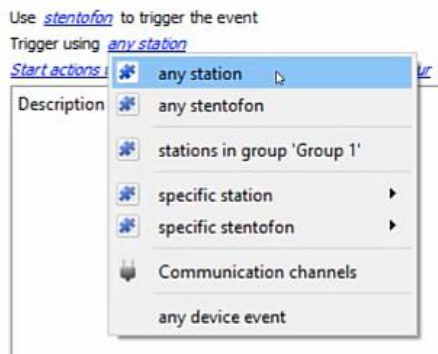


When creating a new event, the trigger type will default to: Use [standard triggers](#).

To define which device should trigger the event, click on the hyperlink after “use”. To set it as the Stentofon device, click on the hyperlink, and select the relevant device name from the dropdown menu.

5.2.2 Trigger Types (Trigger Using)

It is useful to think of this as a **master trigger type**.



Note: The Stentofon device is not available as a master trigger. The only options are any stations, specific stations or station groups.

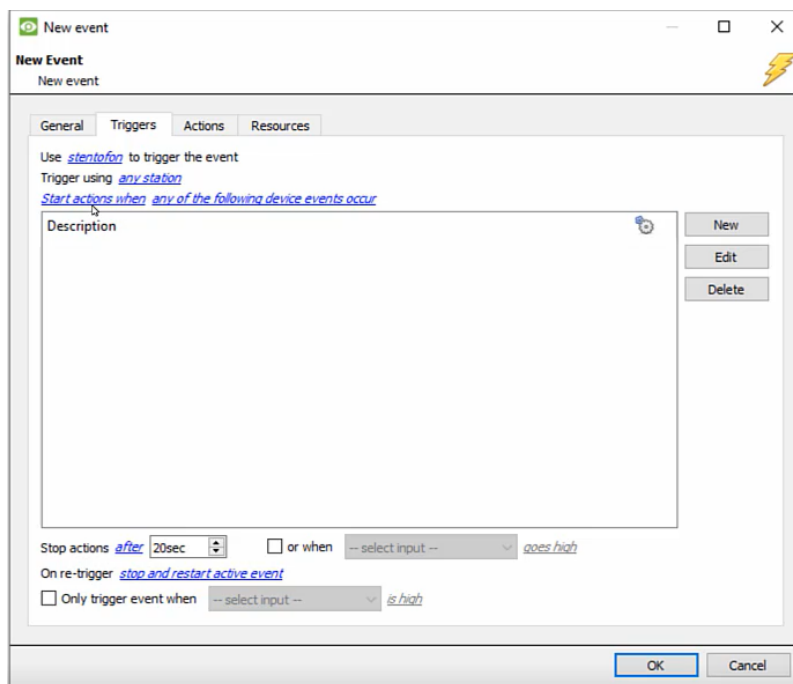
Note for group triggers: For this event to be databased under the name of a specific object, and not the name of the triggering group, modify the Description field in the **General tab** of the Event setup.

Click on the **question mark icon** to see a list of available descriptions.

After selecting a master trigger type, add a trigger to the event.

Click on **New** in the Triggers tab. This will bring up the dialogue box below:

5.2.2.1 Start actions when

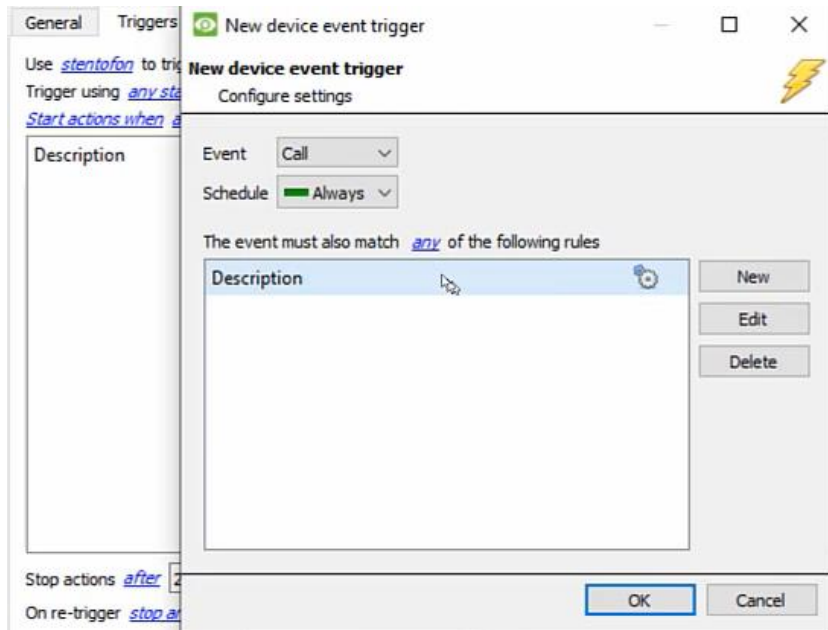


Start actions when: Within the “**start actions when**” option, choose the type of Event that will be the trigger.

Choose from the drop-down menu: either **any of the following device events occur**, or **any of the properties meeting the following criteria**.

Note: Set multiple constraints, and choose if **any** or **all** constraints need to be fulfilled to set off a trigger. If a constraint is not defined, every single device event will send off a trigger.

To add/edit/delete a rule (a constraint) use the New, Edit, and Delete buttons on the right-hand side.



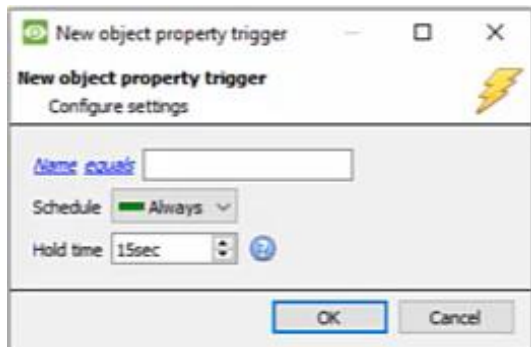
To change the constraint, click on the first hyperlink. This will bring up the full list of available rules.

To modify the way this rule will be treated, click on the second hyperlink. This will display the rules options.

Note: When all available options are known to CathexisVision, a drop-down menu will appear. When these variables are not pre-defined, fill them in.

5.2.2.2 Perform actions while

For triggers that are of the **Perform actions while** type, operators can select **any** or **all of the properties meet the following criteria**. Operators can select a property for the trigger.



5.3 Actions

Once the triggers that are going to initiate the event are defined, define some Actions.


5.3.1 Open Actions Tab

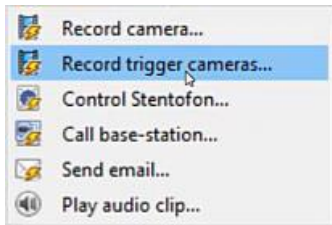


To get started, click on the tab titled “Actions”.



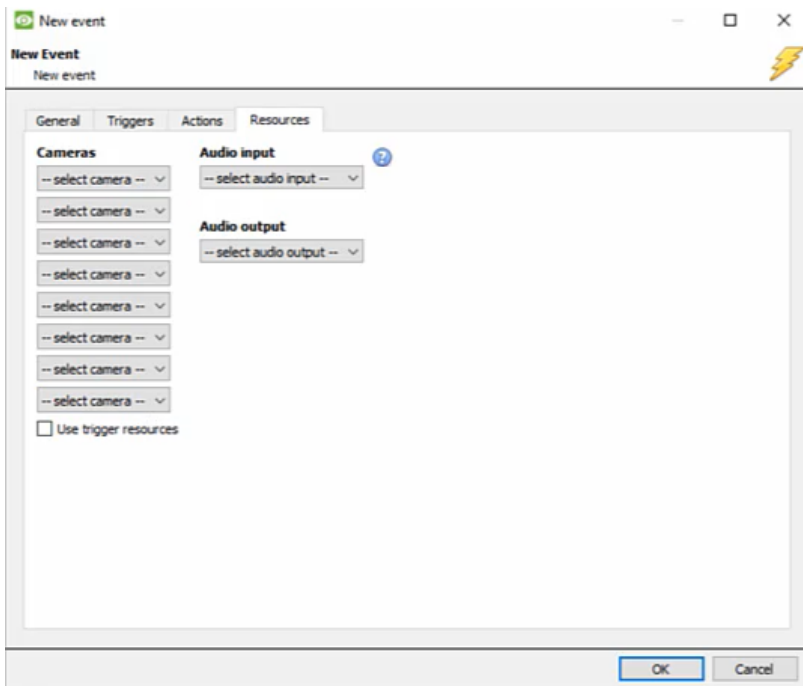
Click **New**.

A menu will drop down containing all the available action types. The device action type is represented by this icon: .



Note: the device cannot be controlled.

5.4 Resources



In the **Resources** tab, operators can select resources to use.

6. Conclusion

This app-note was designed to deal specifically with this integration. For further information about the CathesisVision software, consult the main manual (<http://cathesisvideo.com/>).

For support, email support@cat.co.za